







2



1



1

- Second Floor Apartment
- Serviced With Lift
- Close to Ferry Landing
- Leasehold
- Viewing Recommended
- Two Bedrooms
- Ideal First Time Buy
- Fantastic Location
- Council Tax Band \*B\*
- Call For More Information







**\*\* Video Tour on Our YouTube Channel | <https://youtu.be/ohlrLKyfcsl> \*\***

This superbly presented second-floor apartment is positioned in a sought-after location on Duke Street, Tynemouth, offering a delightful blend of modern living and convenience. Ideal for the first time buyer, couples or those looking to downsize.

The property is accessed via a communal entrance with stairs and a lift and briefly comprises: - private entrance hallway with storage, bright and airy open plan living area with a fitted kitchen featuring integrated appliances and a breakfast bar. There are two double bedrooms and a modern bathroom WC with storage under the vanity unit and a shower over the bath. The apartment further benefits from gas central heating and double glazing.

Located close to the Ferry Landing, this apartment offers the charm of Quayside living, along with the vibrant atmosphere that comes with it. The proximity to Tynemouth adds to the appeal, providing access to beautiful beaches, local shops, and a variety of dining options.



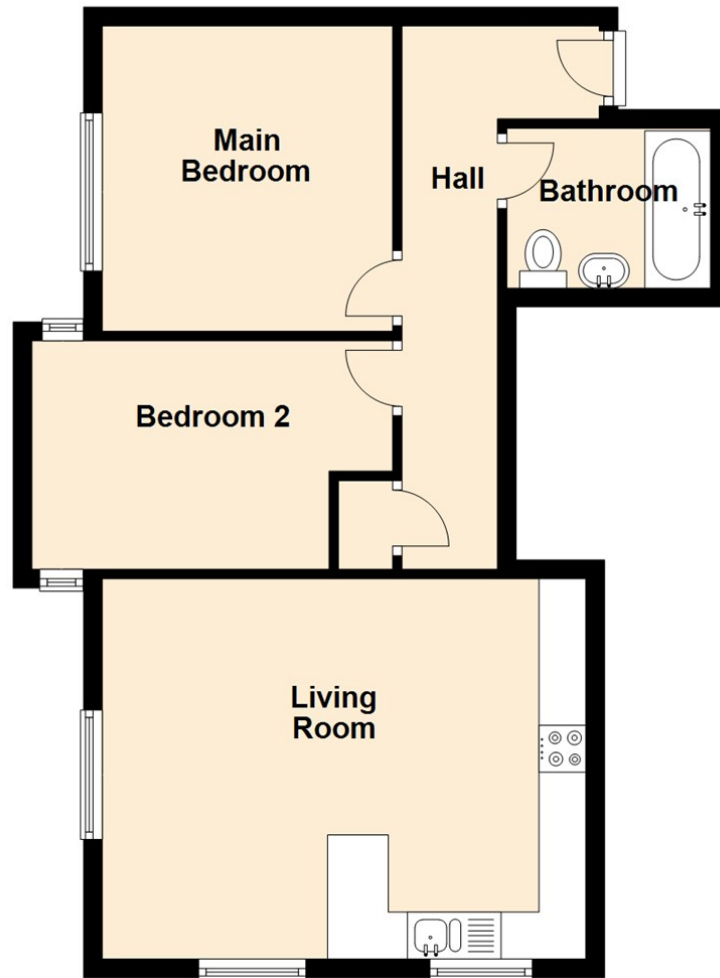
Viewing is essential to fully appreciate this property. For more information, please call our Tynemouth branch on 0191 257 2000.

#### Tenure

The agent understands the property to be leasehold. However, this should be confirmed with a licensed legal representative.

Council Tax band \*B\*.

## Second Floor



Living Area 13'3" x 16'11" (4.06 x 5.16)

Main Bedroom 10'8" x 9'6" (3.26 x 2.92)

Bedroom Two 8'0" x 11'11" (2.44 x 3.65)

### Energy Efficiency Rating

	Current	Potential
Very energy efficient - lower running costs		
(92 plus) <b>A</b>		
(81-91) <b>B</b>	<b>82</b>	<b>82</b>
(69-80) <b>C</b>		
(55-68) <b>D</b>		
(39-54) <b>E</b>		
(21-38) <b>F</b>		
(1-20) <b>G</b>		
Not energy efficient - higher running costs		
England & Wales		
EU Directive 2002/91/EC		

## The difference between house and home

You may download, store and use the material for your own personal use and research. You may not republish, retransmit, redistribute or otherwise make the material available to any party or make the same available on any website, online service or bulletin board of your own or of any other party or make the same available in hard copy or in any other media without the website owner's express prior written consent. The website owner's copyright must remain on all reproductions of material taken from this website.



[www.janforsterestates.com](http://www.janforsterestates.com)

Gosforth  
High Heaton  
Tynemouth

Property Management Centre

0191 236 2070  
0191 270 1122  
0191 257 2000  
0191 236 2680

